

# iQSensitive

## interior paint



Made in Switzerland

**iQSensitive is a highly water-repellent and abrasion resistant inner coating dispersion / silicate basis for a healthy living and climate.**

### Application

iQSensitive is a high quality interior coating for a comfortable indoor climate, especially suitable in moisture-and mold-vulnerable and affected rooms, living rooms and bedrooms, swimming pools, nurse-ries and kindergartens, schools, wet rooms and kit-chens.

### Characteristics

- for a pleasant and healthy room climate
- anti-condensation
- against mold fungus formation
- breathe-actively
- highly water-rejecting
- free of biocides and preservatives
- emission arm and solvent-free
- temperature-adjusting and energy-saving

### Advantage

iQSensitive is specially designed for sensitive and challenging areas residents. Thanks to the special binder and the intercalated light filling the paint sur-face is a long-term protection against mold.



iQSensitive contains no strangers biocidal and is free of harmful formaldehyde. Also omitted in the color due to the addition of specific agents foreign preser-vatives. Overall, it is ensured that there are no unne-cessary health risks of residents with the use of color.

# 3M

with 3M Innovation & Technology



iQprotec GmbH - [www.iqprotec.com](http://www.iqprotec.com)  
PAge 1/2



# iQSensitive

## interior paint



Made in Switzerland

### Hollow silicate beads

The embedded, siliceous lightweight fillers iQSensitive to make an anti-condensation coating and accelerate Abtrocknungsprozesse on the surface. Together with the very good breathability iQSensitive is an efficient paint against mold growth.

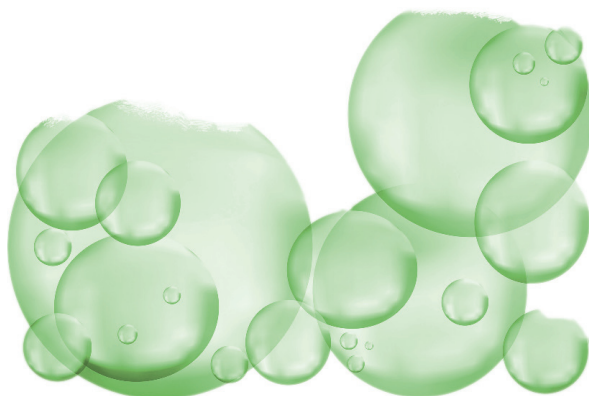
iQSensitive is through the use of ultra-lightweight hollow glass spheres\* much less heat than conventional paints sluggish.

The back surface radiates more heat, thus ensuring a faster and more uniform distribution of the heating in the room.

At lower ambient air temperature and at the same time slightly increased wall surface temperatures, the climate is perceived as pleasant.

There is less heat energy used for the same well-being. Beautiful design and energy saving in a.

The air circulation in the room and therefore the re-suspension of dust and bacteria is significantly reduced.



# 3M

\* with 3M Innovation & Technologie



### Technical data

- **density:** 1.00g/cm<sup>3</sup>
- **gloss:** matt
- **packaging:** 15l
- **total voc (Iso 11890-2):** <10mg/l
- **iodine number:** 7.2
- **spreading rate:** ca 3-4 m<sup>2</sup>/l ( for 2 coatings)
- **application;** roller, brush
- **underground:** all cleaned undergrounds



Inspection report C 14494, 22.03.2010  
(contents)



**iQprotec GmbH**  
Rossbodenstrasse 15  
CH-7007 CHUR  
Tel: +41 (0) 81 250 12 18  
Fax: +41 (0)81 250 12 18

info@iqprotec.com  
www.iqprotec.com